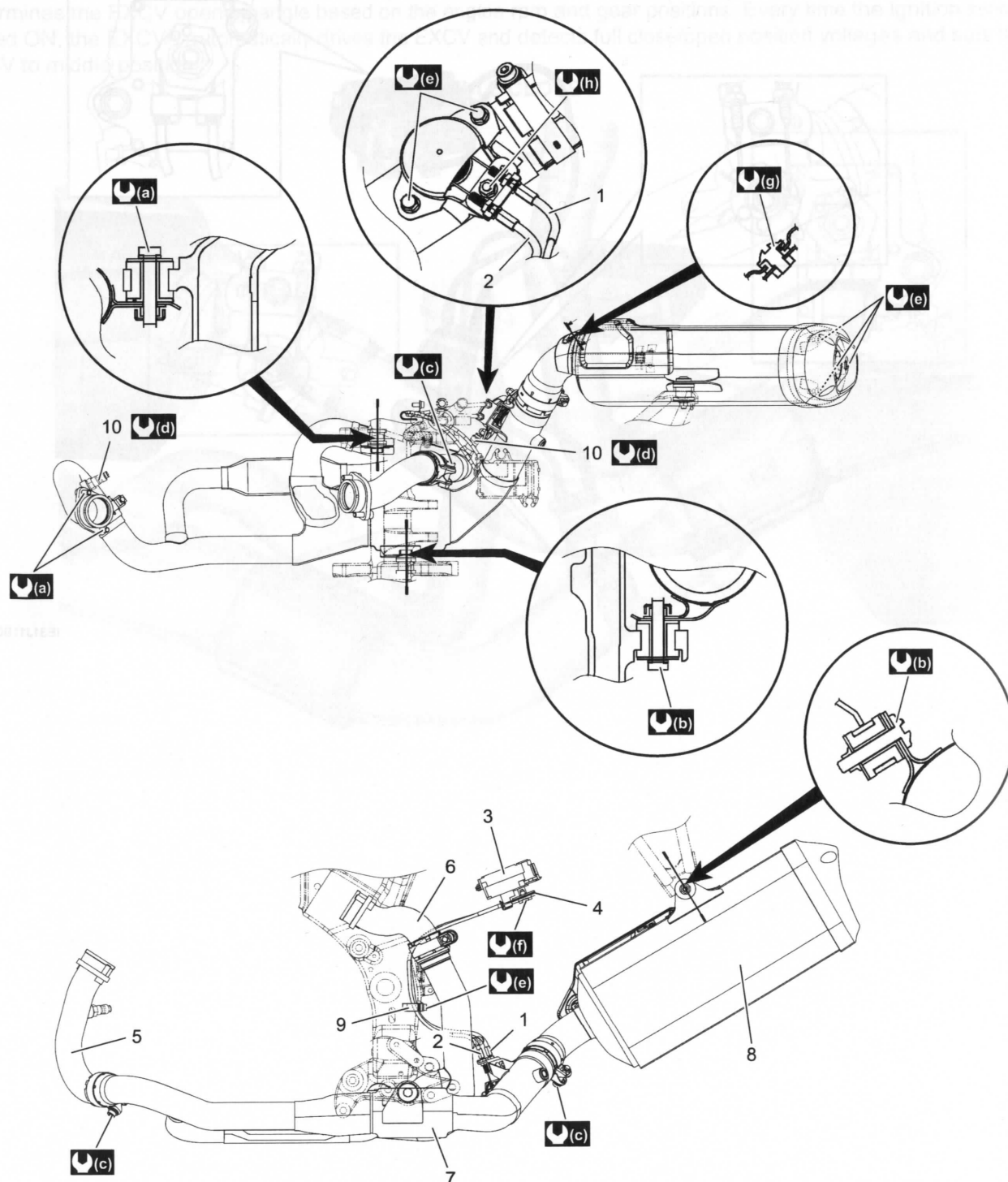


Repair Instructions

Exhaust Control System Construction

BENE31J11B06004

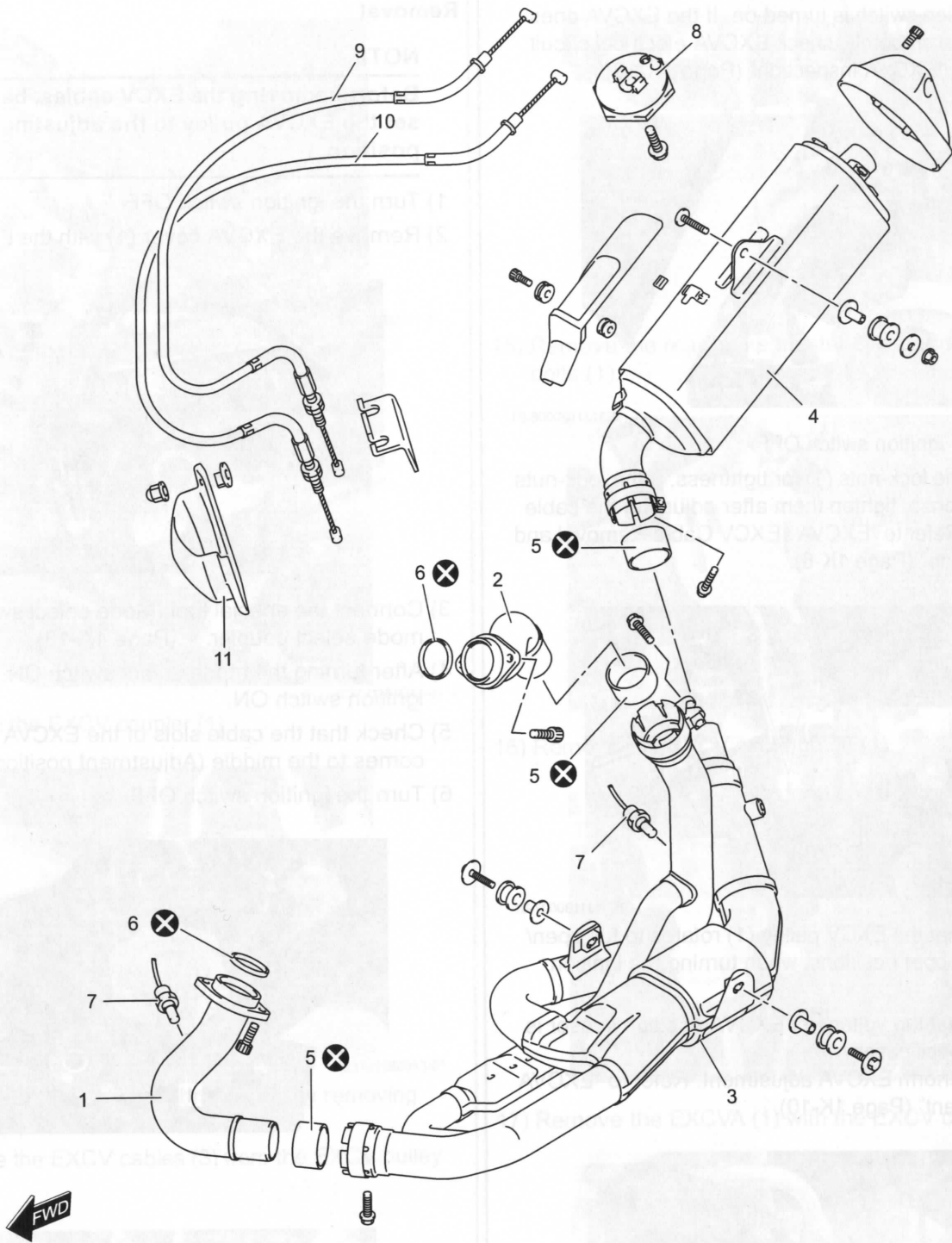


1. EXCV cable No. 1	7. Center exhaust pipe	Ⓒ : 18 N·m (1.8 kgf-m, 13.0 lbf-ft)
2. EXCV cable No. 2	8. Muffler	Ⓓ : 25 N·m (2.5 kgf-m, 18.0 lbf-ft)
3. EXCVA	9. EXCV cable guide	Ⓔ : 10 N·m (1.0 kgf-m, 7.5 lbf-ft)
4. EXCVA pulley	10. HO2 sensor	Ⓕ : 5 N·m (0.5 kgf-m, 4.0 lbf-ft)
5. Front exhaust pipe	Ⓐ : 23 N·m (2.3 kgf-m, 17.0 lbf-ft)	Ⓖ : 5.5 N·m (0.55 kgf-m, 4.0 lbf-ft)
6. Rear exhaust pipe	Ⓑ : 30 N·m (3.0 kgf-m, 22.0 lbf-ft)	Ⓗ : 11 N·m (1.1 kgf-m, 8.0 lbf-ft)

IE31J11B0004-05

Exhaust System Components

BENE31J11B06001



IE31J11B0005-03

1. Front exhaust pipe	5. Connector	9. EXCV cable No. 1
2. Rear exhaust pipe	6. Exhaust pipe gasket	10. EXCV cable No. 2
3. Center exhaust pipe	7. HO2 sensor	11. EXCV cover
4. Muffler	8. EXCVA pulley	⊗ : Do not reuse.